

University Placement Programs



The Wild Medic Project
POWERED BY EARTH TRAILS EXPEDITIONS



Table of Contents

- 1. Welcome
- 2. A brief history
- 3. Core values
- 4. Timelines
- 5. Locations and trip length
- 6. Team structure
- 7. Guides and risk management
- 8. Flights & insurance
- 9. Planning your university trip





The Wild Medic Project
POWERED BY EARTH TRAILS EXPEDITIONS

Welcome

Welcome to the Wild Medic Project. A social initiative that is aimed at bringing primary medical care to those who need it by providing a platform that engages medical based university and college students to assist in facilitation of remote clinics.

In this booklet you will find useful information pertaining to the projects' philosophies, history, aims and locations which should give you an understanding of how our educational and clinical health camps really do make a difference.

Please be aware that humanitarian work is never free in the truest sense and money is needed to both fund the projects and the equipment required. Your involvement both physically and financially in the project ensures that these clinics can be funded and can operate successfully. We hope you can become part of the story.

The Wild Medic Team



A brief history

In early 2015 The Wild Medic Project was developed as a not for profit project by two paramedics, Steve and Mick who shared a passion for health care and more specifically remote health care.

Following the April 2015 Nepal earthquakes, they conceived the idea for the Wild Medic Project to assist some villages that had little support from the larger NGOs working in Nepal. Through Nepali friends Jeevan and Bishnu, the Wild Medic team identified a valley in Helambu Nepal that was populated by over 5000 people who still only had very limited access to health care almost 6 months after the devastation occurred. The project members combined their medical skills, expeditionary experiences and army training to develop the concept of the humanitarian expeditions through a community consultation process and with the help of Jeevan and Bishnu, engaged a community health committee to direct the teams future.

The first team deployed in 2015 travelling into the remote community of Chitre where they set up the first health post in a borrowed 'UN' tent. This health post is now part of a network of four remote clinical posts that have been manned by Nepali, Australian, Dutch, English, American and Scottish clinicians and has assisted thousands of people access primary health care. Recently a shift from providing medical support to provide training of the local workforce and providing equipment ensured a sustainable solution for the community in accessing primary health care.

The Wild Medic Project is now established in a number of countries and continues to grow and evolve into a sustainable platform that delivers basic primary healthcare and education projects that engage health and medical based student groups supervised by registered nurses, paramedics and local physicians.

TIMELINE

The Wild Medic Project



TIMELINE

The birth of the concept

Two mates both working as paramedics discuss an idea to assist Nepali communities in desperate need for health assistance post earthquake



May 2015

Vanuatu begins

WMP begins assisting Planet Medic to place paramedics in parts of Vanuatu to support a local ambulance service



Jan 2016

First university team deploys

The WMP supports a team of paramedicine students from the University of the Sunshine Coast to assist in Chitre, Nepal



Aug 2017

Looking ahead

WMP is focusing on getting better at what we do every day - The future looks exciting



Beyond

Nov 2015



First team deploys

A team of 5 medics depart for the village of Chitre to run the very first WMP clinic while preparing the way for future teams

Aug 2016



Women's health initiative

WMP deploys an all female medic team to help educate and empower local women in the Bagar valley, Nepal

April 2018



Wild Timor begins

After a visit to some remote communities in Timor-Leste the previous year, the WMP launches the very first team to assist on Atauro island



The Wild Medic Project
POWERED BY EARTH TRAILS EXPEDITIONS





Where our projects are located

The Wild Medic Project began its operations in Helambu, Nepal post earthquake in 2015. We now have other sustainable projects that are changing lives around the Asia-Pacific region:

- Helambu, Nepal – Remote humanitarian health clinics and clinical placements
- Atauro Island, Timor-Leste – Ambulance immersion and First responder empowerment
- Suva, Fiji – Hospital and ambulance experience and outer island health post
- Port Vila / Gava island – Ambulance immersion and remote island first responder program

Project length options:

Anywhere from 9 days up to 22 days.
Please see our Proposal document for each option



The Programs at a Glance

We've been building our reputation by collaborating with Australian and New Zealand universities in health care programs and projects internationally since 2015. Our programs are safe and flexible and are designed to meet your university's program's needs. The programs will be designed to support course objectives and meet the academic requirements, whilst the students experience and partake in healthcare programs, develop personnel and professional skills and best of all, have a safe adventure!

Programs can run for 2,3 or 4 weeks and the students will be immersed and involved from day one. Students will be provided flights, insurance, all transport, accommodation, food on project, translators, medical equipment, supervision, relevant permissions, uniforms and leadership. All teams are led by registered health professionals who work collaboratively with local health care specialist. Students develop their critical thinking and problem-solving skills, communication ability and abilities to analyse information whilst broadening their international perspectives on the local regions.


These programs are professional learning experience that encourage a shared experience between students, leaders and host communities to positively impact communities around the world.



University Placement Programs

Although we are small provider, we specialise in health care placements only. The small nature of our operation allows a personalised experience that ensures that the community projects are efficiently run from start to end, that the course requirements are met, and that the students and the community share the experience.





Program Structure

We currently offer two types of clinical experiences

Education Empowerment

- ✓ 1 x Wild Medic Leader
- ✓ 10 -15 x Health related students
- ✓ 1 or 2 x lecturers
- ✓ Heavy focus on community development



Clinical & Development

- ✓ 1 x Wild Medic Leader
- ✓ 10 - 20 x Medical based students
- ✓ 1 or 2 lecturers
- ✓ 1 x Local doctor
(Medical authority)



The in-country support staff

The Wild Medic Project provides employment opportunities to the local population as these are the experts in that area. The in country support staff are responsible for logistical support to the itinerary and provide:

- Expedition planning assistance
- Drivers / transfers
- Hotel / Guesthouse accommodation
- Cook team or meal supply whilst on project phase
- Expedition tent if required (Twin share)
- Emergency and evacuation support
- Warm hospitality and an experience to remember





Risk, Safety and Support

Our Wild Medic Project trips are in locations that generally don't have the same strict safety regulations that we are used to in our home countries. The inherent risk is largely due to the geographical location, remoteness and often the method in which we journey.

In order to mitigate any potential risks on our trips, we have had to personally risk assess the itineraries from start to finish and then put in place strategies to prevent or manage incidents as they arise.

Through our planning process we identify hazards, and strategically plan to minimise the likelihood of the risk happening or the consequences if it does.





FLIGHTS AND INSURANCE

Our programs have the option to include return flights ex major capital cities. Medical and repatriation insurance is included on all programs for participants. If flights are to be included they are organised for each participant as a group booking once the final balance is paid no later than 12 weeks from departure date. The travel insurance product disclosure document will be emailed to all participants. The comprehensive insurance policy cover includes:

- Personal accident & sickness
- Personal liability insurance
- Medical evacuation
- Repatriation
- Political & natural disaster evacuation
- Search & rescue expenses





Why us?



Australian Owned

We are an Aussie owned and operated grass roots company who employ locally.



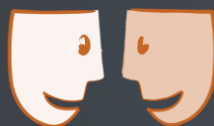
Extensive safety record

This has been achieved through a rigid planning process and risk reduction strategy.



24/7 support to teams

We have a dedicated operations contact available 24/7 for teams whilst overseas.



One point of contact

You will deal with the same person for all queries in relation to the placement programs planning and preparation.



Health care experts

Our team specialise in health care and are active emergency service officers and medical professionals who understand health care fundamentals.



We're supporting the UN SDGs

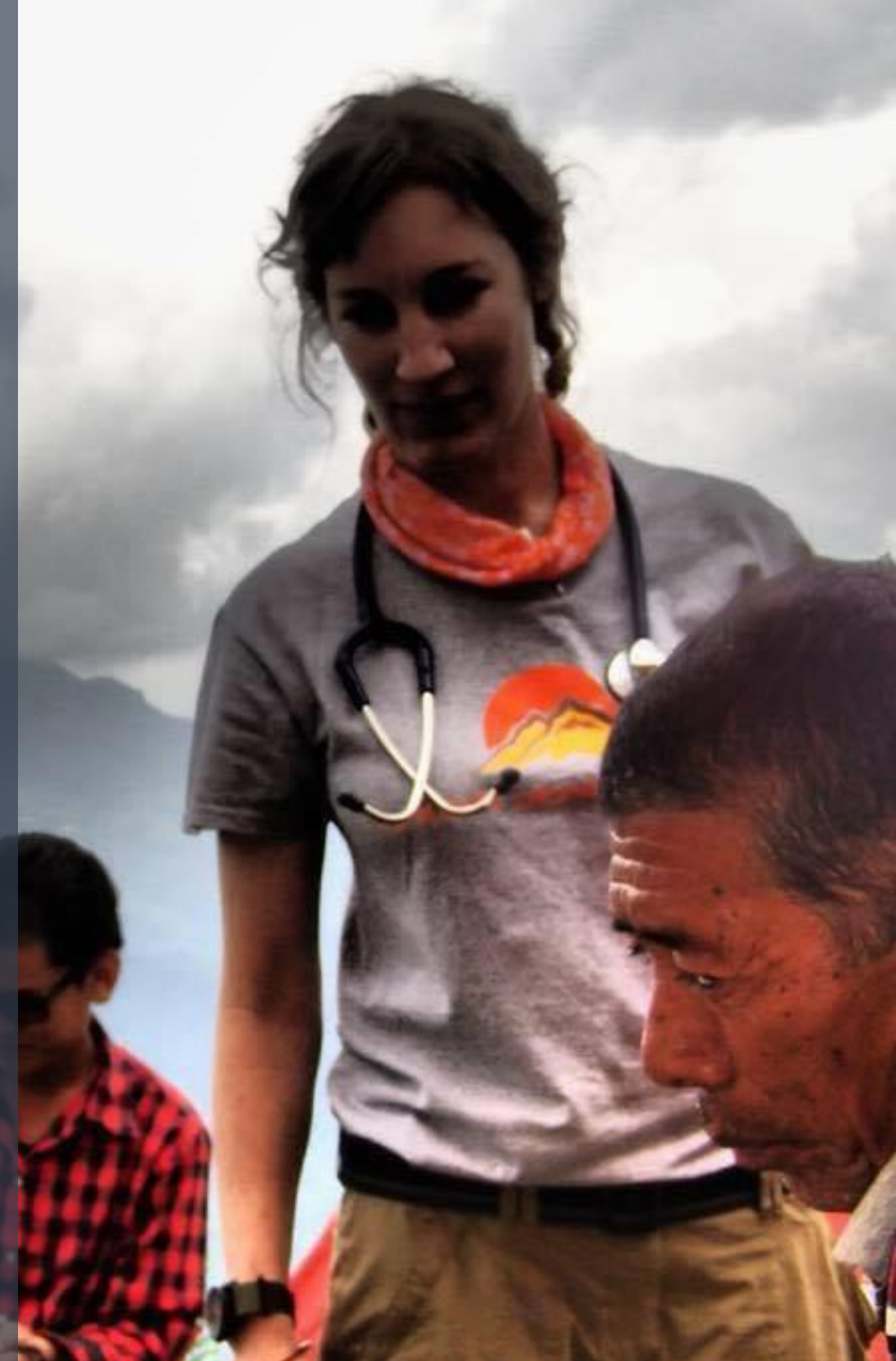
Our community projects have been aligned with the Global Sustainable Development Goals (3 & 6) and we are committed to these goals .



Our commitment to you:

Our commitment to you:

- ✓ We will work with you in the initial stages to understand your needs. And maintain an acceptable standard of work health and safety and health care provision.
- ✓ Support your students and give them realistic expectations that prepare them accordingly for their upcoming placement.
- ✓ We will ensure the placements meets all your course objectives.
- ✓ We will manage all of the administrative and logistical aspects of the placement program.
- ✓ We will provide a single point of contact for the university staff and students.
- ✓ We will manage the bookings on behalf of the university and provide regular updates to the faculty.
- ✓ We will provide students with pre-departure information to ensure their team is aware of local cultures and placement program expectations.
- ✓ We will provide a comprehensive risk mitigation strategy, that includes 24-hour operations contact to our teams on the ground, an experienced team leader and a uniforms.





The Wild Medic Project

132 

Volunteers deployed
across 9 locations in 3
countries



7000+

Patient assessments
performed in rural
health clinics



160

Rural dental
procedures

160 

Rural eye
assessments



16+

Medical expeditions
so far...



800+

First aid students
attended sessions



137k

\$137,000+ sent to Timor
Nepal & Vanuatu



\$10k

toilet block
built



2 X

community
shelters built



Donated PA systems, 2
printers and 4 computers
to local schools



Donated 3 beds, 4 lockers
a steriliser and 8
response kits

Student immersion in the real world through positive impact projects





Planning your university project

Choose a location and date

Choose a location and we will ensure your project is partnered with a community where your university can establish an ongoing relationship with. Then request a date that works for you and we'll chat with the community committees to confirm the program.

Put it out there to your group

If you have a student group, share the project with them, energize and encourage them to get involved. Our team will come and chat to them at an information session.





The Wild Medic Project
POWERED BY EARTH TRAILS EXPEDITIONS

Book your group in for the trip of a lifetime today!

Contact us for country specific info and prices

Email: admin@earthtrails.com.au

Phone: 1300 193 349